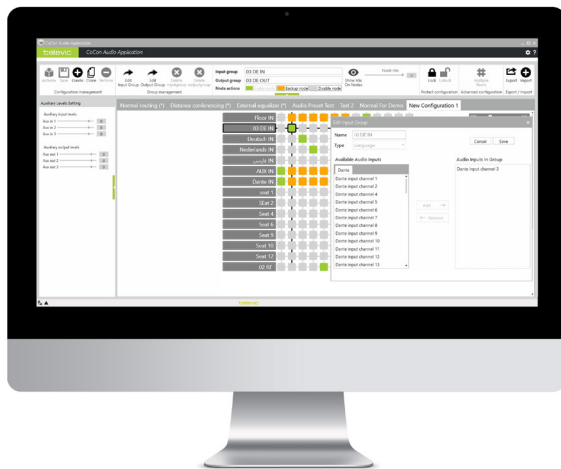


Plixus Virtual Interpretation



CONFERENCE

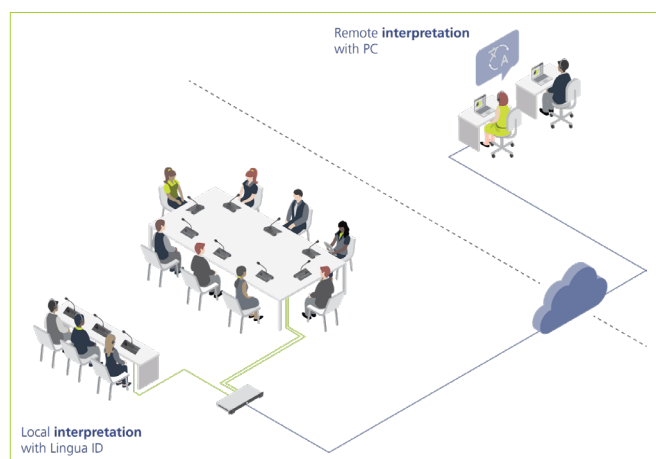
Description

Make your meetings more flexible, scalable, and cost-effective with the **Plixus Virtual Interpretation** license. Whether you're organizing an on-site, hybrid or fully virtual event, this powerful solution allows you to deliver real-time translation from **remote interpreters** located all around the globe—in combination with local interpreters using physical interpreter desks.

With Plixus Virtual Interpretation, you have control over remote interpreter desks via API integration, while reducing physical setup costs and increasing flexibility.

All you need to make it work are the **CoCon Discussion** and **CoCon Audio Routing** modules, combined with a **digital remote interpretation platform** (RSI) such as Interactio. The Plixus Virtual Interpretation license unlocks an **API service** in the Central Unit that enables the coexistence of remote and on-site interpretation. Channel quality (relays) calculation is therefore supported, as well as the override from local to remote interpretation, and vice versa.

Whether the interpretation is on-site or remote, the audience enjoys a **consistent, high-quality audio experience**—with live interpretation that feels as natural as being in the room.



Boost Efficiency & Cut Costs

Say goodbye to costly interpretation booths, extensive cabling, and on-site technical setups: with Plixus Virtual Interpretation, the setup is streamlined, **saving you time and significant operational expenses**.

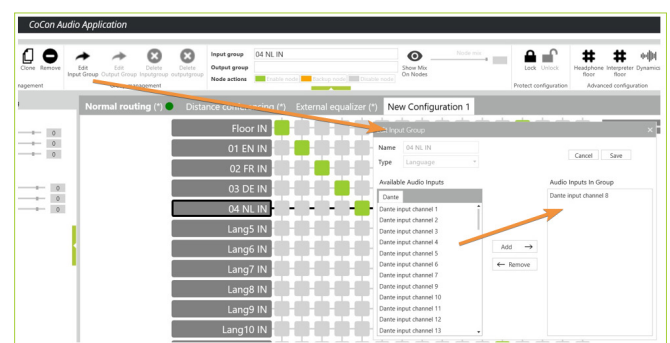
Interpreters benefit from increased comfort and flexibility by working from anywhere in the world, while also **eliminating travel expenses**.

Greater Flexibility & Global Reach

Combining a Plixus system with an RSI platform offers many advantages as it fits **all types of events**, from small-scale meetings to international conferences, as well as any format (in-person, remote, or hybrid). Easily tap into a global network of qualified interpreters, free from geographic limitations. This ensures quick access to talent, and **greater scheduling flexibility** (e.g. for last-minute or off-hours events)—perfect for dynamic event planning.

Simple Setup with Powerful Capabilities

Activating virtual interpretation is easy through the **CoCon Audio Routing module**. Technicians just need to select the local **interpretation input group** and assign a **Dante channel**—allowing interpretation audio to be delivered from either local interpreter desks or remote Dante inputs. Microphone control is handled efficiently via special **API integration** that is unlocked once the license has been purchased.



Features

- » Provides real-time interpretation from **remote interpreters** without need for physical booths.
- » Unlocks an **API service** on the Central Unit (Plixus AE or Plixus MME) for controlling **Dante inputs** and audio quality.
- » Possibility to **combine interpretation formats**, with both physical booths and remote interpreters.
- » **CoCon Discussion, CoCon Audio Routing** and **RSI platform** required.

System Requirements

Hardware Requirements

Room Server:

- » Processor: Intel i5-10500E 3.1 GHz / i7 processor
- » RAM: minimum 8 GB is required as the PC contains many other apps and programs; If the room contains more than 200 units, 16 GB RAM is required for the Room Server PC
- » Free disk space: minimum 10 GB
- » Network connectivity: at least 100 MB/s

Client Applications:

- » Processor: Intel® i3 2 GHz or higher
- » RAM: Minimum 4 GB
- » Recommended graphical hardware supporting DirectX 9.0 or better
- » Free disk space: Minimum 10 GB
- » Network connectivity: at least 100 MB/s

Note: When running multiple client applications on the same PC, at least 2 GB per client is required.

Network Requirements for Central Units Connecting over TCP/IP

- » Available bandwidth of at least 100 Mb/s for each CoCon Room Server/Central Unit connection
- » Available bandwidth of at least 100 Mb/s for each CoCon Room Server/Client connection

Switch Requirements

- » Bandwidth (switching capacity): at least 16 Gbp
- » Packet buffer RAM: 512 KBytes per device
- » Filtering address table: 8K MAC addresses per device

Software Requirements

- » Windows 10 Pro or Windows 11 Pro (en-US) installed with English international language

Each PC installed with a CoCon component (any server or client application) requires the .Net Framework 4.6.2. This will be installed automatically when CoCon is being installed.

HQ Belgium

+32 51 30 30 45

conference@televic.com

<https://www.televic.com/en/conference>

Asia

+86 21 61 48 01 23

conference@televic.com

www.televic-conference.com.cn

France

+33 3 74 09 52 76

conference-france@televic.com

www.televic-conference.fr

United States

+1 916 920 0901

conference-us@televic.com

All information copyright Televic Conference, 2025.

Televic reserves the right to change this document without notice.

Version 1.0