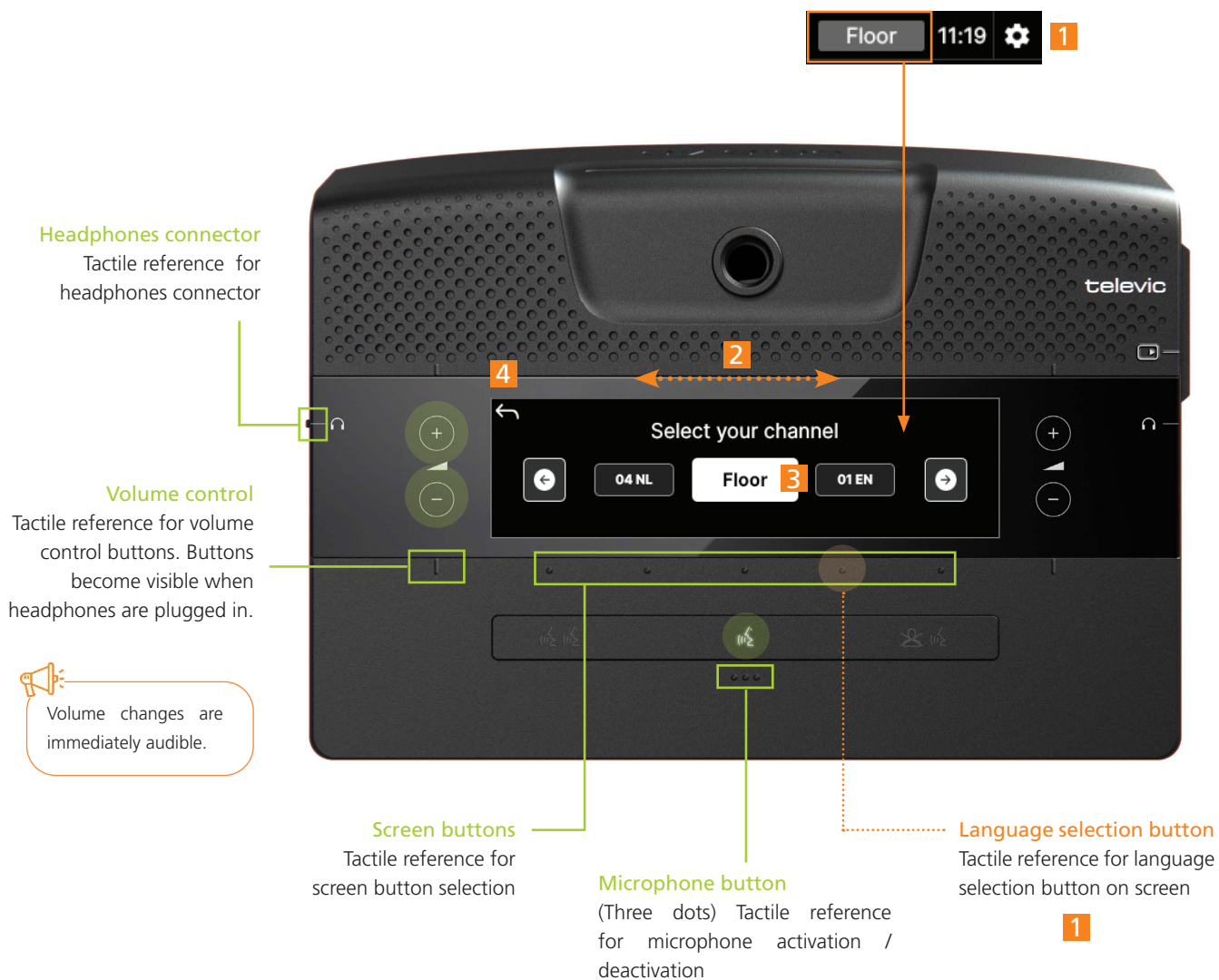


Confidea FLEX

Quick Start Guide for Language Selection



Language channel selection

To choose the language channel:

1. Press the Channel selection button in the top right of the main screen:



2. Navigate through the available languages using the arrow buttons or swipe through the list.

3. Press the language channel of your choice. The selected channel is highlighted in white.



4. Press the back button to leave the channel selection screen.



Lost in the menu? Wait 5 seconds and the unit will automatically return to the main screen.