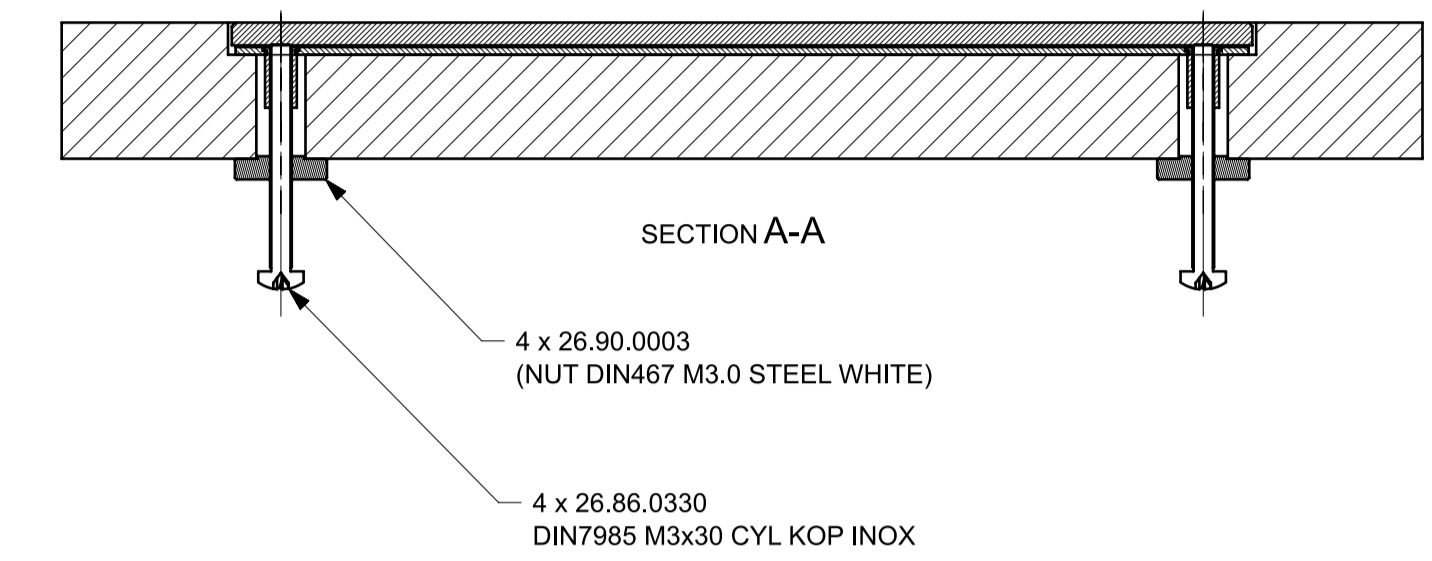
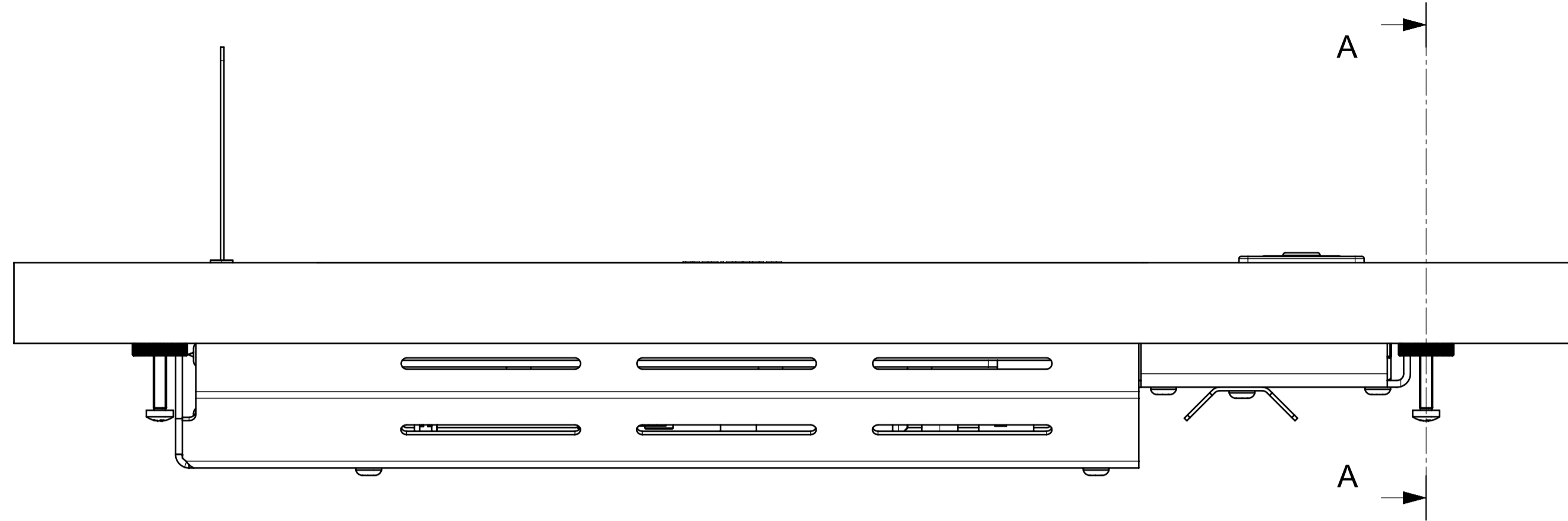
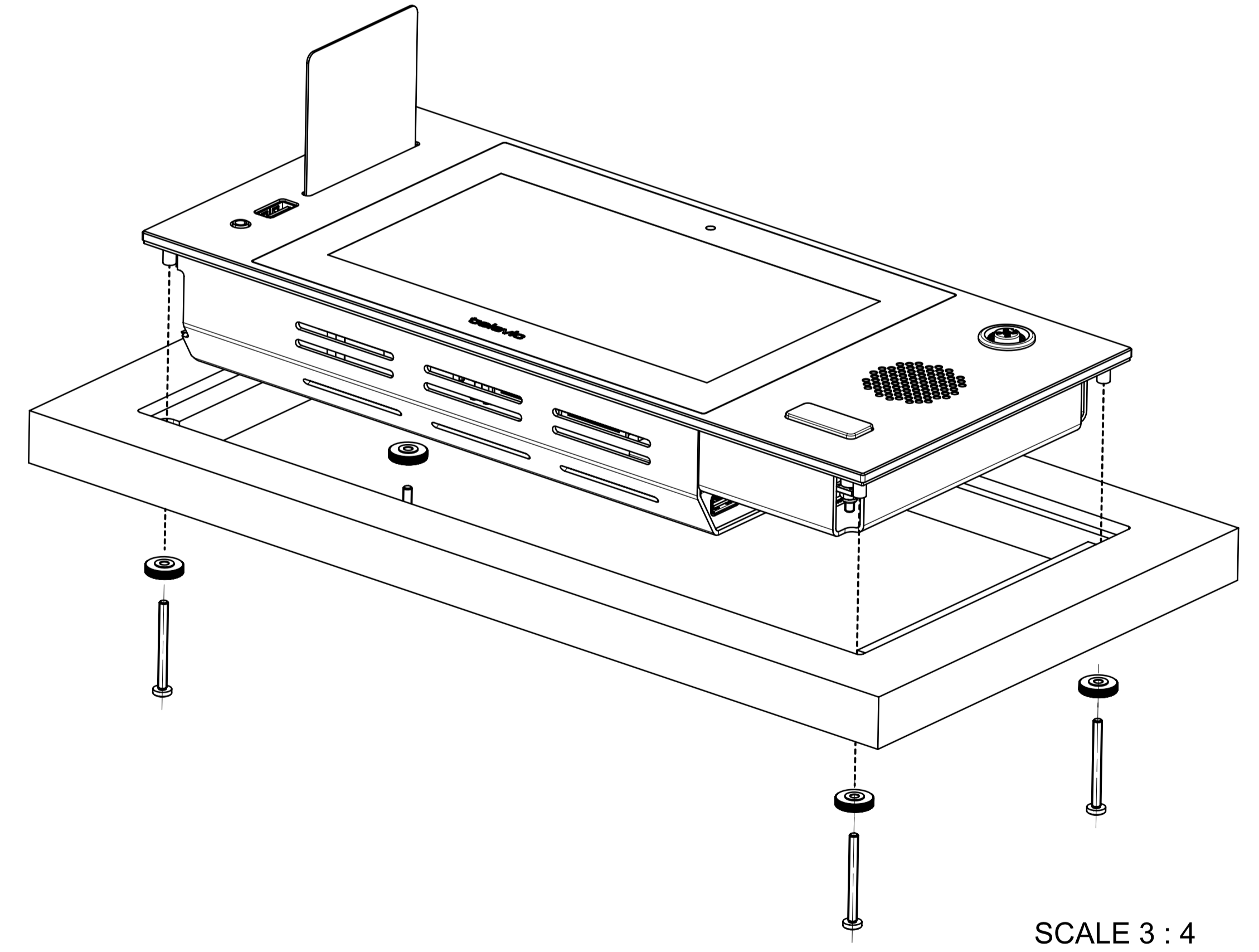
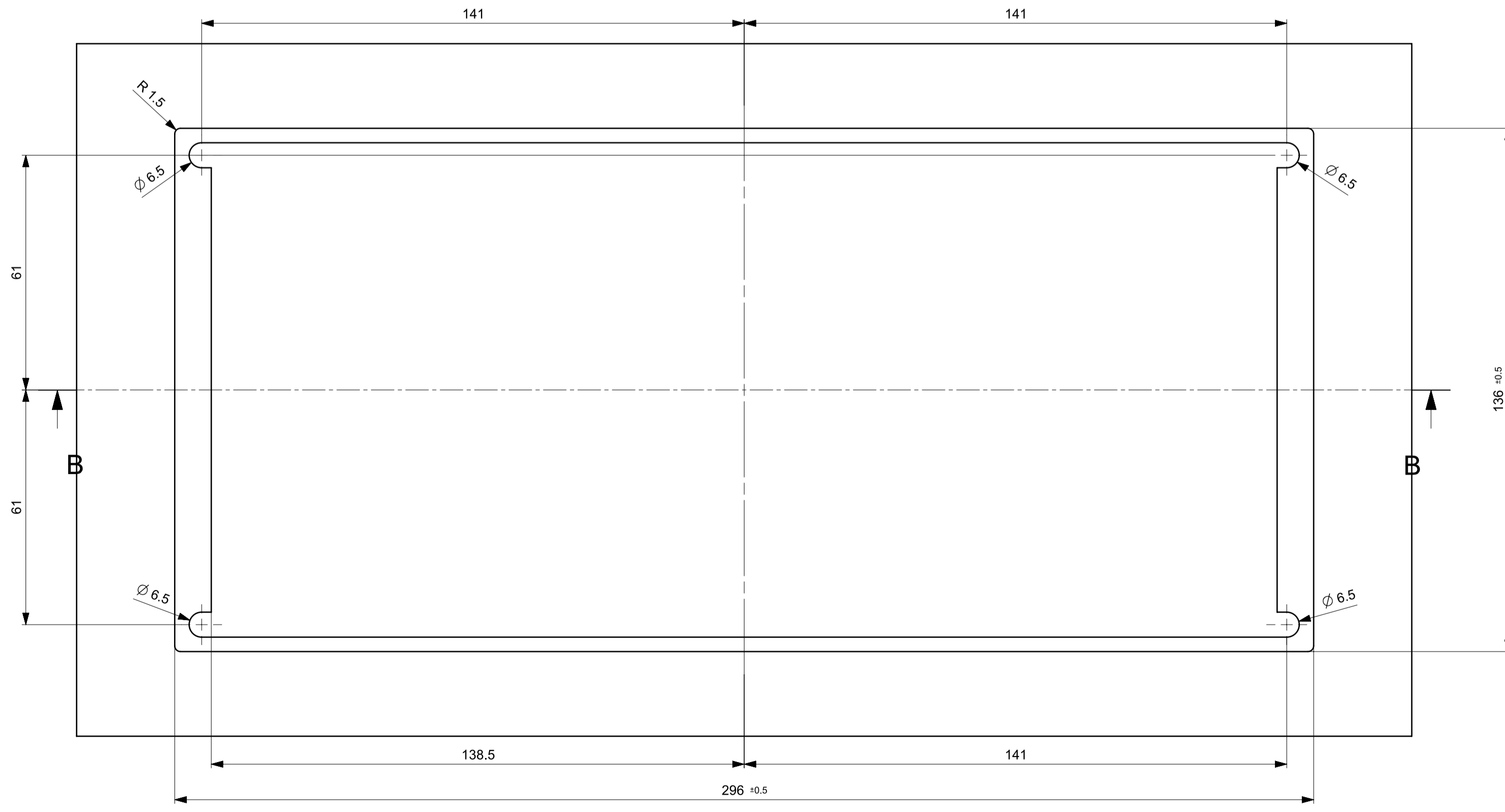
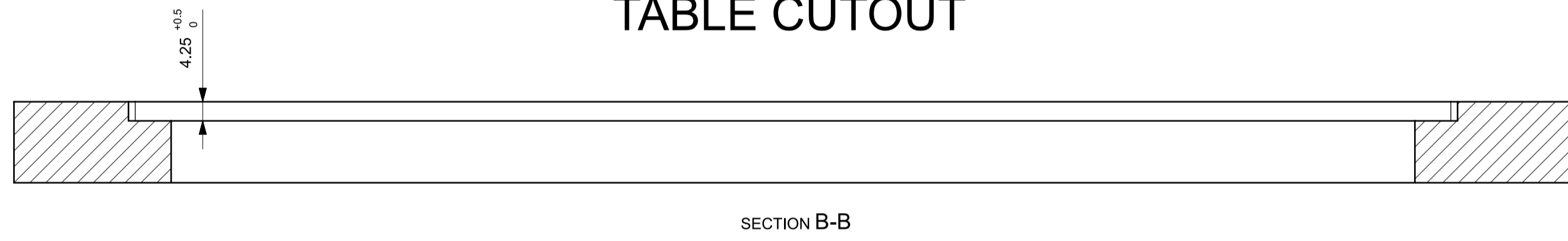


Remarks
 front :
 material :
 Frontplate : aluminium - E = 3mm
 finishing : black anodised, grinding grain size 180
 symbols / text : RAL7040
 mntp :
 material : hot dipped galvanised steel - E = 1mm
 covers and mntp middle :
 material : aluminium - E = 1.5mm
 Dimension :
 * module size : (WxHxD) 295 x 135 x 50mm
 * cutout table :
 + 296 x 136 mm R1,5 ∇ 4.25 mm
 + 277 x 128.5 with 4 x slot \varnothing 6.5mm ∇ through



! Hand tighten the nuts

TABLE CUTOUT



SCALE 3 : 4

0.05		Change backcover shape and ventilation slots	03/03/19	L-stin	
0.04		Concept change camera assembly	25/11/18	L-stin	
0.03		Change LS Mounting	29/09/18	L-stin	
0.02		add hole for speaker performance / add slots for tie wraps / change speaker bracket	31/08/18	L-stin	
0.01		Original drawing	04/07/18	L-stin	
Revision	ECN-nr	Remarks - description	Date	Name	
Linear tolerances		Surface roughness	Shape and positioning tolerances	Band tolerances	Finishing
ISO 2768-middle		ISO 1302	ISO 1101 / ISO 2786 - K	ISO 2768-middle	See remarks
Drawing name					Material
7" UNIT PLIXUS F/MM INTEGRATION					See remarks
Drawn by	Name	Date	Drawing number	Sheet	2 of 2
L-stin	L-stin	03/03/19	71.98.2002_M07_2D2_0.05	Scale	1 : 1
Approved by	APPROVE	DATE_APPROV	unit : mm	Format	A1
L-stin		03/03/19			
					All rights reserved. No parts of this concept may be reproduced in any form or by any means without the prior written permission of Teleovic.