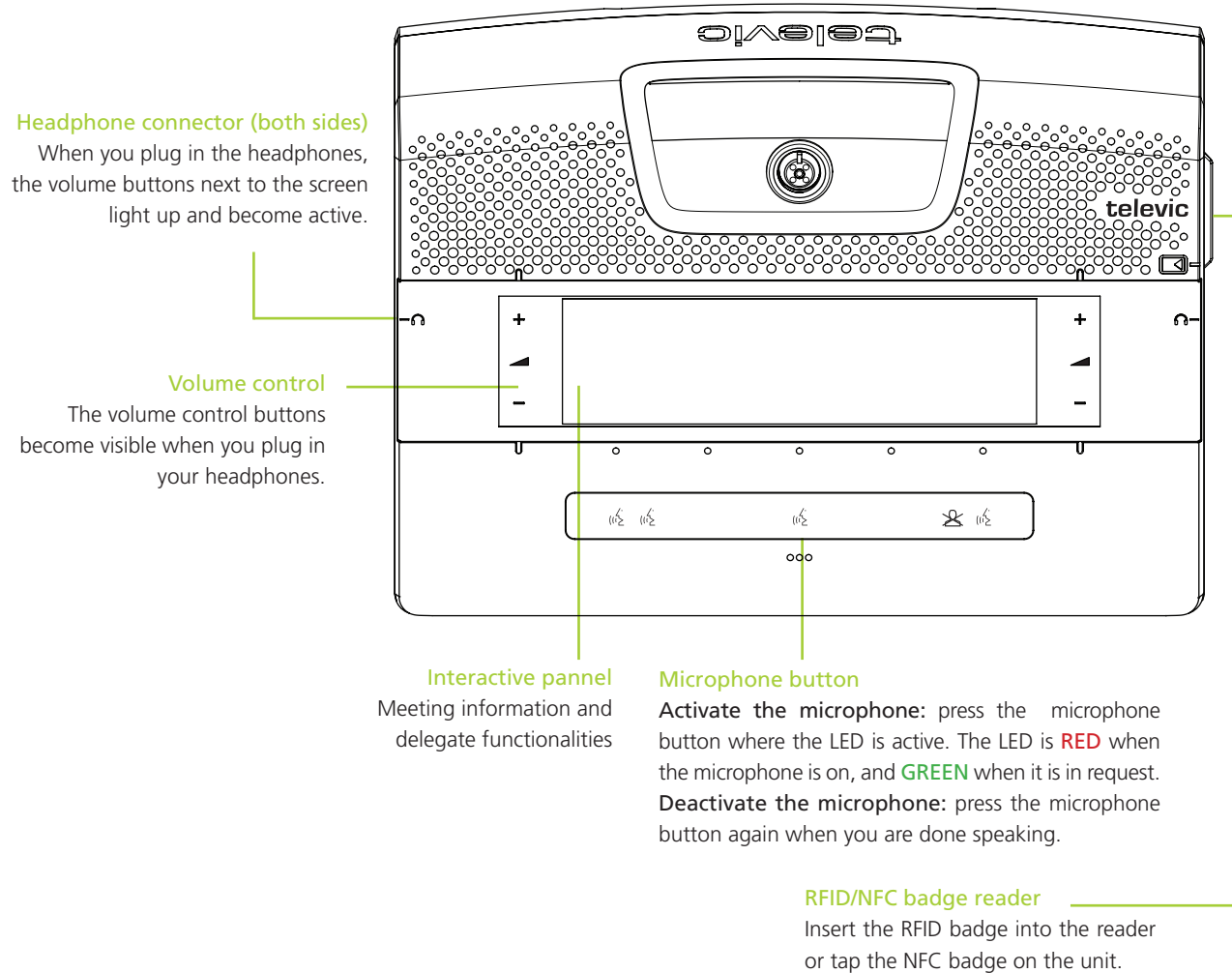


Confidea FLEX

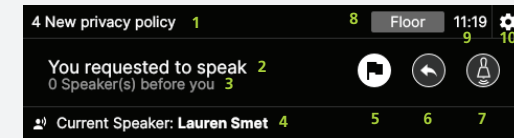
Quick Start Guide for the Delegate

Quick Start



Main screen

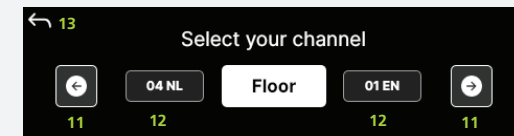
The main screen shows different information and functionalities related to the delegate: meeting name or agenda item (1), request to speak (2), number of speakers before you (3), current speaker (4), cancel your request (5), reply to the current speaker (6), service request (7), language channel selection (8), current time (9), settings (10).



Language channel selection screen

To choose the language channel:

- » Press the Channel selection button (8) on the main screen.
- » Navigate through the available languages using the arrow buttons (11) or swipe through the list.
- » Press the language channel of your choice. The selected channel is highlighted in white (12).
- » Press the back button (13) to leave the channel selection screen.



Speaking screen

The speaking screen shows you a numerical speech timer (14), a progress bar (15) whose color changes to orange and red when the speech time is running out, and a button to deactivate the microphone (16).

